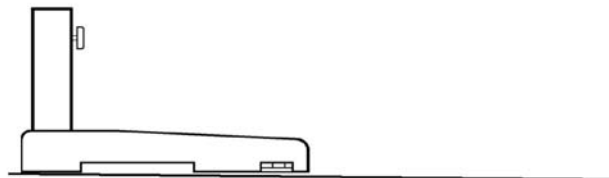
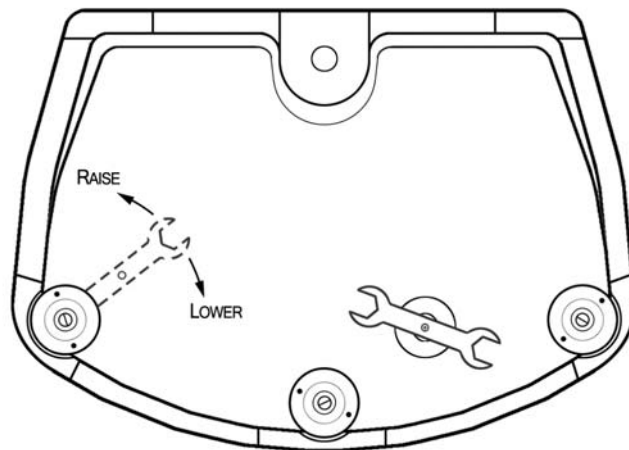




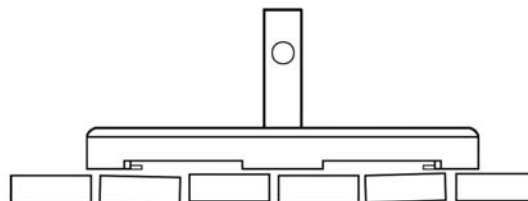
CUSTOM CAST BASE LEVELING INSTRUCTIONS

Your **Custom Cast Base** and **OFF-THE-WALL BRELLA®** may be leveled to compensate for sloped or uneven decking.

- Screw the Stand-Tube tightly into the base.
- Put the umbrella in the base and place them where they will be used.
- Lean the umbrella so the very top almost touches the wall and the umbrella pole is frontally straight left-to-right.
- Determine the amount each leveler will need to be extended for proper alignment. Remove the umbrella. Turn the base over and adjust the levelers accordingly.
- Use the wrench provided to turn the hex nut under the footer and adjust the leveler as shown -
 - The center leveler extends to lift the front of the base and position the top of the umbrella towards the wall.
 - The left and right levelers are for left and right frontal alignment.



SLOPE



UNEVEN DECK

